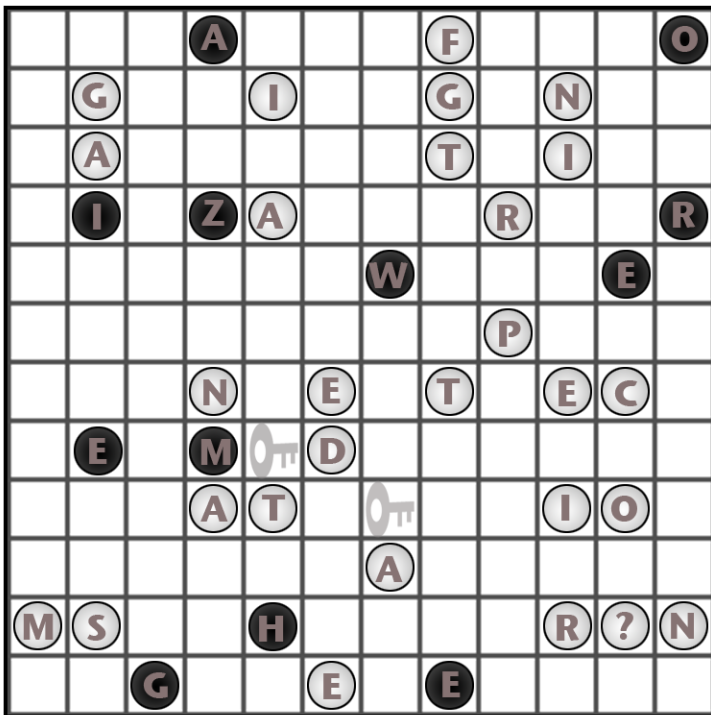




Track I
Starting Puzzle

Masyu

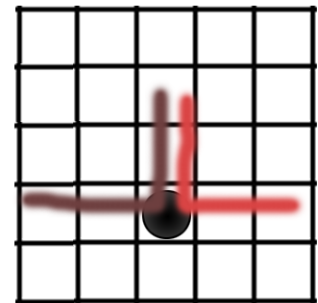
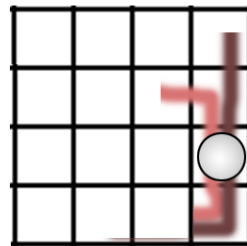
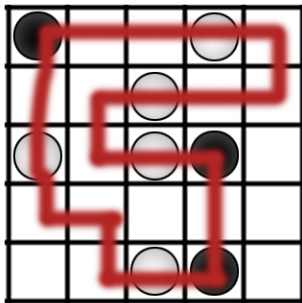
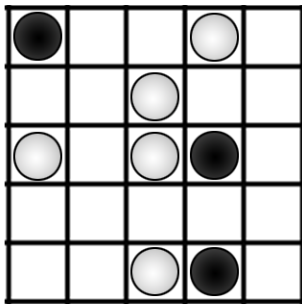


Draw a single closed loop path that connects adjacent squares (and cannot cross itself). The loop must go through all of the squares that have beads in them.

When passing through a white bead, the path **MUST** go straight through it, and turn at **ONE OR MORE** of the adjacent squares.

When passing through a black bead, the path **MUST** turn, and go straight through **BOTH** of the two adjacent squares.

The loop passes through a square at most **ONCE**.



Above show both possible legal moves for the situations indicated.